

A photograph of a hotel lobby. In the foreground, there are two light-colored armchairs with dark cushions and a dark wood coffee table with a vase of flowers and a candle. In the background, there is a bar with a tufted leather backrest and a counter. The room has a warm, classic atmosphere with wood paneling and a carpet.

STARHOTELS®

Majestic

TORINO

Every inch of the Majestic, from its grand nineteenth-century mansion location to its thoughtful interior touches, lives up to its name. Standing opposite the Porta Nuova railway station, the Majestic is your personal palace in the heart of Torino. From the Liberty skylight and crystal chandelier above the restaurant to the refined style of the recently refurbished rooms, the hotel is rich in turn-of-the-century glamour and contemporary comfort. What's more, with ten conference rooms for over 1.000 delegates in total, we're the largest business hotel in Torino and are sure to create events with impact.

Corso Vittorio Emanuele II, 54
10123 Torino - ITALY
T +39 011 539153
F +39 011 534963
majestic.to@starhotels.it
starhotels.com



Rooms & Suites

Spacious and comfortable, our 161 rooms and suites are perfect for both business and leisure guests.

Restaurant & Bar

Enjoy international cuisine and local dishes under the beautiful Liberty skylight in our Le Regine restaurant, or relaxing drinks in our traditional bar, Il Circolo.

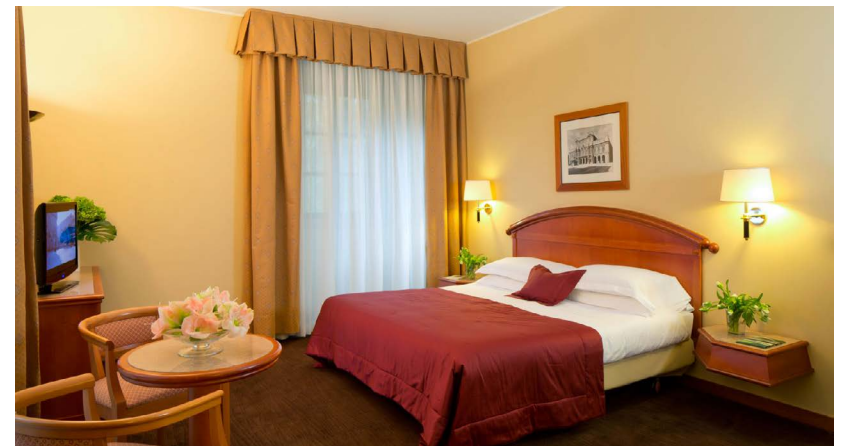
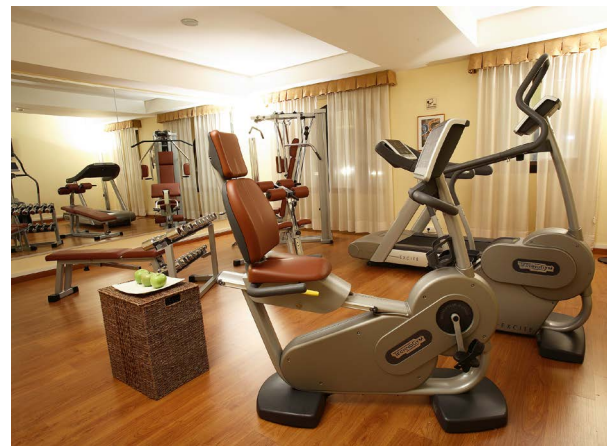
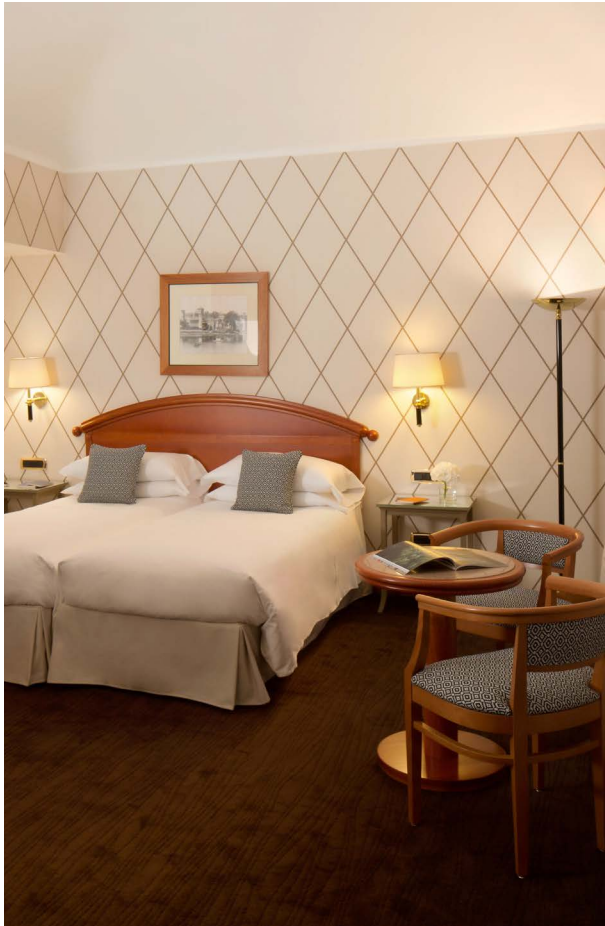
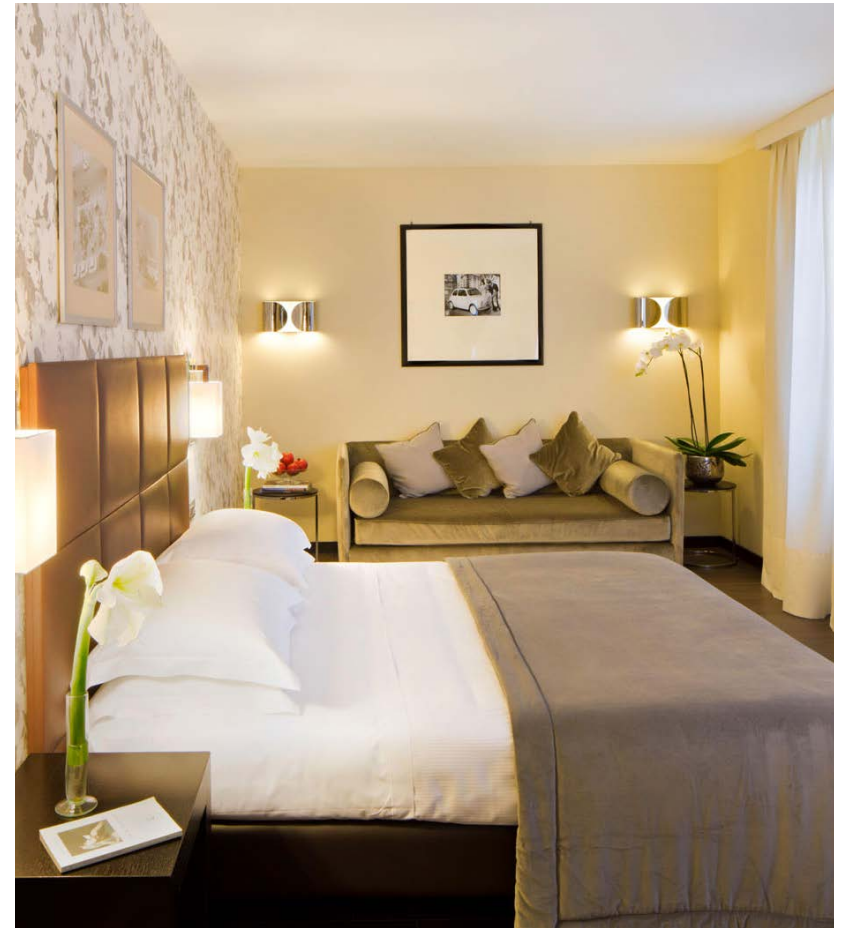
Services

Thoughtfully selected to ensure your stay is exceptional – from room service and laundry to concierge, Wi-Fi and fitness center.

Meetings & Events

We have ten conference rooms for up to 484 delegates and an experienced team to help deliver your event with flair.







Location

The hotel is located in central Turin, near the Porta Nuova train station and some world-class shopping. The historic city center is a short walk away, putting you in an ideal position for visiting popular attractions such as the Civic Gallery of Modern and Contemporary Art, the Cinema Museum and the Egyptian Museum.



From the station

- From the Porta Nuova train station (100 meters away).

From the highway

- From the A4 Torino/Venezia highway and the A5 Aosta/Torino highway (7km), exit at Corso Giulio Cesare, go towards centro città/Stazione Porta Nuova.
- From the A6 Savona/Torino highway and the A21 Piacenza/Torino highway (5km), take the Corso Unità d'Italia exit, go towards centro città/Stazione Porta Nuova.
- From the A32 Bardonecchia/Torino highway (6km), exit at Corso Francia, go towards centro città/Stazione Porta Nuova.

From the airport

- From the Caselle "Sandro Pertini" Airport (27km), take a bus from the terminal towards the city center to the Stazione Porta Nuova stop.



10 meeting rooms

All meeting rooms are equipped with: Wi-Fi (at a charge), sound system, screen, LCD projector⁽¹⁾, flip chart, other services are available upon request.

⁽¹⁾Max one LCD projector complimentary, additional requests at a charge



Meeting rooms	Area mq / ft.	L x W mt. / ft.	Height mt. / ft.	Theatre	Class room	Conference table/ U-shape	Cabaret style [^]	Cocktail reception	Banquet
Vittoria (A)	184 1979,84	12,60x14,60 41,34x47,90	3,85 12,63	150	70	40	48	205	120
Vittoria (B)	107 1151,32	14,60x7,40 47,90x24,28	3,4 11,15	80	50	30	30	115	70
Vittoria (C)	109 1172,84	14,60x7,90 47,90x25,92	3,4 11,15	90	50	30	30	115	70
(A+B+C)	400 4304	27,40x14,60 89,89x47,90	3,40-3,85 11,15-12,63	484	180	80	114	300	270
(A+B)	292 3141,92	20,00x14,60 65,62x47,90	3,40-3,85 11,15-12,63	300	130	60	84	215	195
(B+C)	218 2345,68	14,80x14,60 48,56x47,90	3,4 11,15	200	80	60	66	160	145
Eleonora	67 720,92	13,13x5,05 43,08x16,57	3,1 10,17	50	30	30	-	75	45
Margherita	51 548,76	9,90x5,15 32,48x16,90	3,1 10,17	25	20	15	-	55	35
Studio Clotilde [°]	36 387,36	6,50x5,60 21,33x18,37	2,3 7,55	-	-	15	-	45	25
Cristina (A)	27 290,52	6,60x4,20 21,65x13,78	3,7 12,14	-	-	12	-	25	10
Cristina (B)	27 290,52	6,60x4,20 21,65x13,78	3,7 12,14	-	-	12	-	25	10
Cristina (A+B)	55 591,8	13,30x4,20 43,64x13,78	3,7 12,14	40	20	20	-	40	30
Studio Adelaide (A) [°]	23 247,48	3,60x6,40 11,81x21,00	2,3 7,55	-	-	9	-	25	10
Studio Adelaide (B) [°]	24 258,24	3,80x6,40 12,47x21,00	2,3 7,55	-	-	9	-	25	10
Le Regine Restaurant [°]	294 3163,44	11,50x25,60 37,73x83,99	-	-	-	-	-	360	220
Il Circolo Bar [°]	-	8,00x10,00 26,25x32,81	-	-	-	-	-	100	-

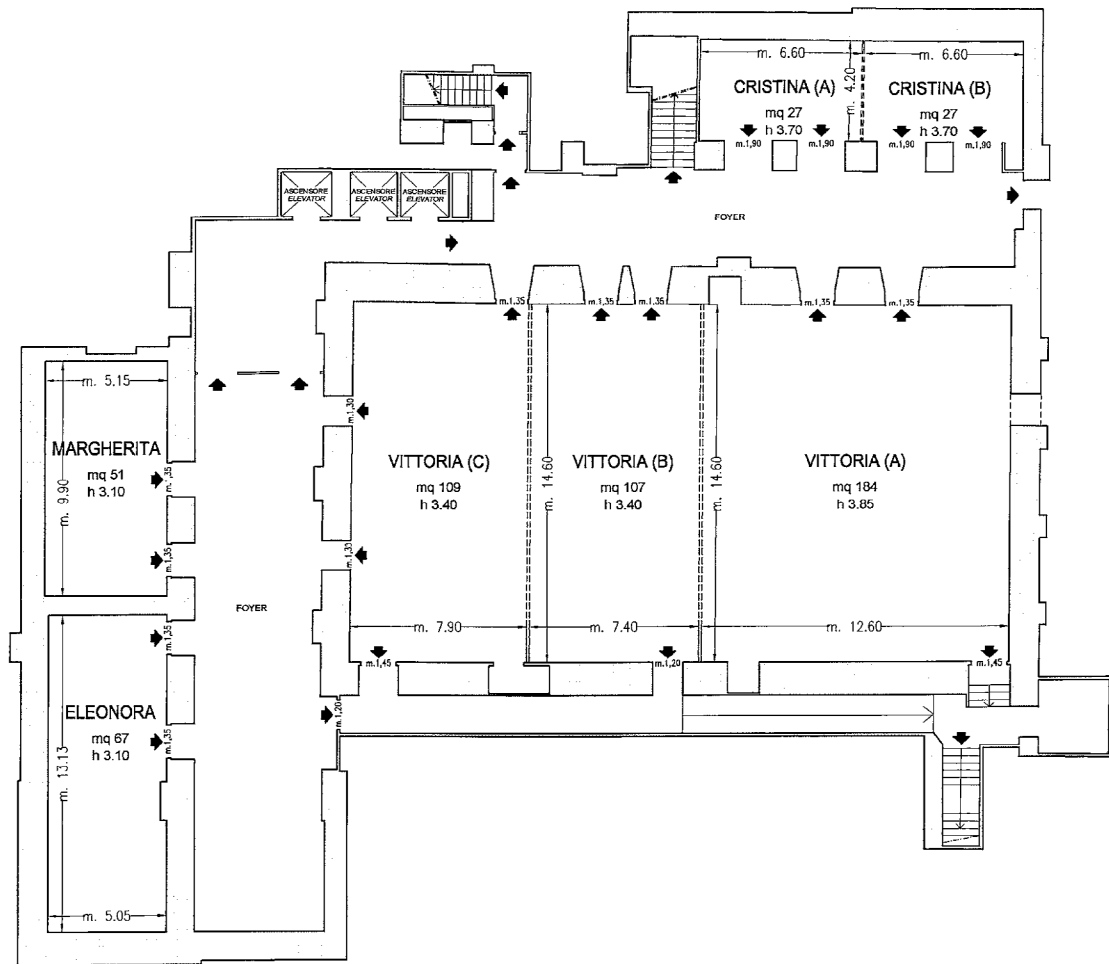
[°] Daylight

[^] Cabaret style: Diameter tables 170 cm, up to 6 pax each

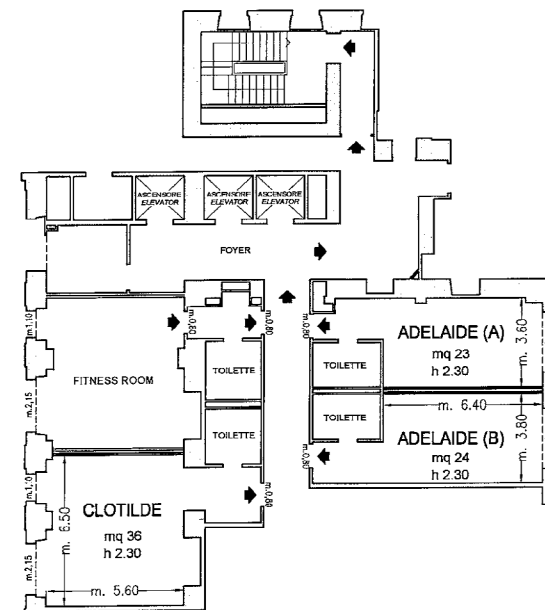
STARHOTELS

Majestic
TORINO

Corso Vittorio Emanuele II, 54
10123 Torino - ITALY
T +39 011 539153 - F +39 011 534963
meeting.majestic.to@starhotels.it starhotels.com



Piano -1 / Basement



Piano Primo / First Floor

10 meeting room fino a 484 persone/ 10 meeting rooms up to 484 seats

► Uscite di sicurezza / Emergency Exits

----- Finestre / Windows

===== Pareti mobili / Modular Walls

□ Colonne / Columns

STARHOTELS®

Majestic
TORINO

Corso Vittorio Emanuele II, 54
10123 Torino - ITALY
T +39 011 539153 - F +39 011 534963
meeting.majestic.to@starhotels.it starhotels.com