



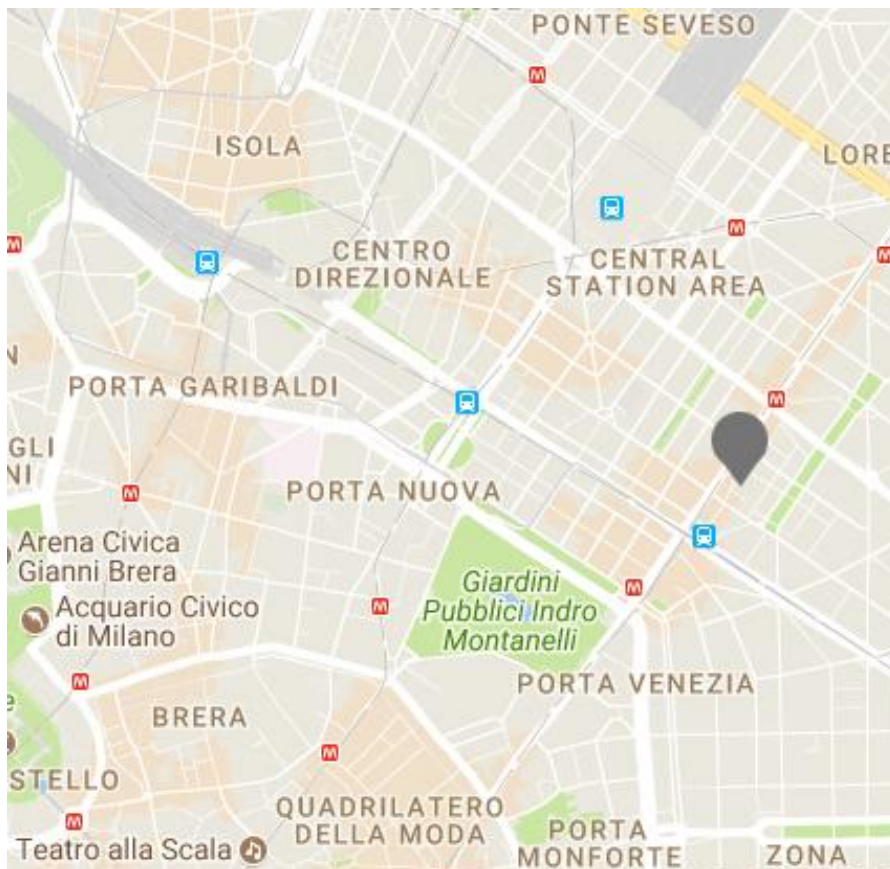
STARHOTELS®
PREMIUM

Ritz
MILANO



*In the lively heart of
Milan*

Its chic, contemporary atmosphere and the strategic position near Porta Venezia and the dazzling shop fronts of Corso Buenos Aires, make the Starhotels Ritz the ideal starting point to experience the unique charm of Milan, the world capital of fashion and design. The elegant interiors and prestigious furnishings of its 197 recently renovated rooms and suites, with large black-and-white photos above the beds, are an example of the unique style that makes this thriving metropolis such an exciting destination.



Location

Within easy reach of Porta Venezia and Corso Buenos Aires, and only a short distance from the historic centre

Distances

Railway station:

air terminal Km 1

Railway link:

Metro stop P.ta Venezia

Highway: Km 4

Underground:

MM1 Lima / MM1 P.ta Venezia - MM2 - MM3 Stazione Centrale

Airport:

Linate Km 10 - Malpensa Km 50

Fairgrounds:

Milano (City) Km 5 - Milano (Rho) Km 10

Via Spallanzani, 40 - 20129 Milano - ITALY

T +39 02 20551 F +39 02 29518679

ritz.mi@starhotels.it

starhotels.com

Restaurant & Bar

The Bruschetteria Grill & BBQ by Eataly restaurant delights guests with dishes that skilfully combine the flavours of traditional Italian cooking with international recipes inspired by the exclusive partnership with Eataly. During the summer you can enjoy an excellent lunch or a candlelight dinner in the pretty, green dehor of the restaurant.

In the intimate setting of its refined interiors, the sophisticated bar is the ideal venue for a superb coffee, a quick lunch or a cocktail.





197 Rooms

28 Classic
96 Superior
50 Deluxe
17 Junior Suite
6 Suite

The 197 recently renovated rooms and suites are all furnished with quality fabrics in a contemporary style. Magnificent blow-ups of Milan cityscapes adorn the walls and some rooms offer a private terrace with a view over the city.





Meetings & Events

Meeting rooms: 7
Capacity (theatre style): 170 max

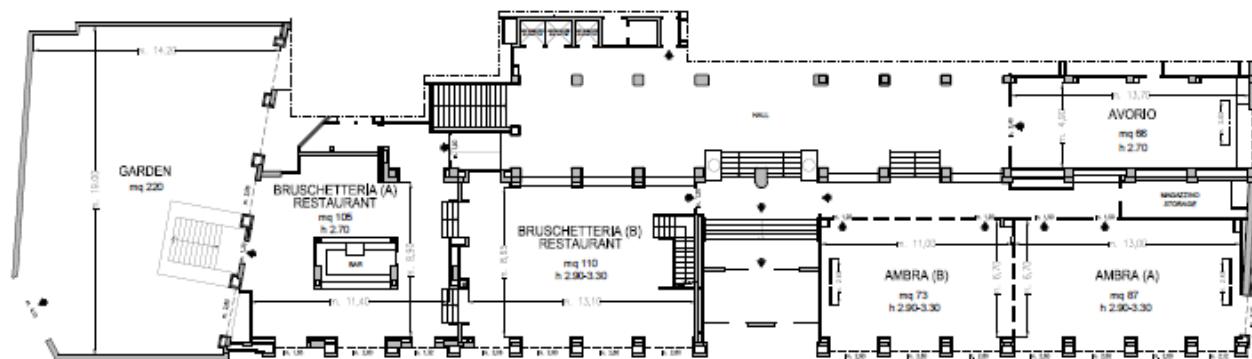
The hotel provides 7 bright, spacious and versatile meeting rooms that can host up to 170 people.

All meeting rooms are equipped with hi-tech facilities and a team of professionals is available to support clients to find the perfect solution.

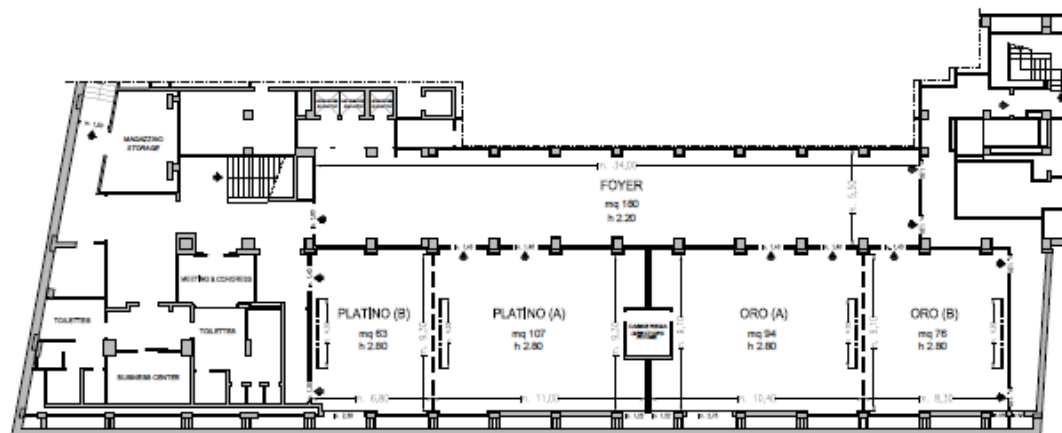


Ritz

MILANO



Piano Terra / Ground Floor



Piano -1 / Basement

- Uscite di sicurezza / Emergency Exits
- Schermo / Screen
- - - Finestre / Windows
- - - Pareti mobili / Modular Walls
- Colonne / Columns

Ritz

MILANO

Meeting rooms	Area mq / ft.	L x W mt. / ft.	Height mt. / ft.	Theatre	Class room	Conference table/ U-shape	Cabaret style^	Cocktail reception	Banquet
Platino (A)	107 1151,32	11,00x9,30 36,09x30,51	2,8 9,19	80	50	34	50	100	60
Platino (B)	63 677,88	6,80x9,30 22,31x30,51	2,8 9,19	40	30	18	16	40	40
Platino (A+B)	170 1829,2	17,90x9,30 58,73x30,51	2,8 9,19	170	80	50	66	160	100
Oro (A)	94 1011,44	10,40x9,10 34,12x29,86	2,8 9,19	80	50	34	50	100	60
Oro (B)	76 817,76	8,30x9,10 27,23x29,86	2,8 9,19	50	30	28	16	50	50
Oro (A+B)	170 1829,2	20,50x9,10 67,26x29,86	2,8 9,19	170	80	60	66	150	100
Avorio	66 710,44	13,70x4,90 44,95x16,08	2,7 8,85	50	30	20	15	50	30
Ambra (A)°	87 936,5	13,00x6,70 44,95x22,00	2,90-3,30 9,51-10,82	75	50	30	32	90	60
Ambra (B)°	73 785,8	11,00x6,70 36,10x22,00	2,90-3,30 9,51-10,82	60	40	22	32	70	40
Ambra (A+B)°	160 1722,28	24,20x6,70 79,40x22,00	2,90-3,30 9,51-10,82	160	80	55	64	160	100
N° 5 Studio Junior Suite	28 301,39	6x4 19,67x13,12	2,95 9,67	-	-	12	-	-	-
Foyer	180 1937,5	34x5,50 111,5x18,05	2,2 7,2						
Bruscherteria Grill&BBQ by Eataly Restaurant (A)	105 1130,24	11,40x8,90 37,40x29,20	2,7 8,85	-	-	-	-	-	26
Bruscherteria Grill&BBQ by Eataly Restaurant (B)	110 1184,06	13,10x8,65 42,98x28,38	2,90-3,30 9,51-10,82	-	-	-	-	-	80
Bruscherteria Grill&BBQ by Eataly Restaurant (A+B)	215 2314,3	24,50x8,90 80,38x29,20	2,7 8,85	-	-	-	-	150	106
Garden / reception and restaurant area	220 2368,13	19x14,20 62,31x46,57	-	-	-	-	-	50	-

° Daylight

^ Cabaret style: Diameter tables cm 180, up to 8 pax each