

The image shows a bright, modern hotel lobby. On the left, several large, lush green plants in white pots are arranged. In the center, there are several decorative wooden stools made of tree stumps. To the right, there are white armchairs and more plants. In the background, there are tall, slender, woven sculptures. The ceiling has recessed lighting, and the walls are light-colored.

STARHOTELS®  
PREMIUM

Excelsior  
BOLOGNA



# Excelsior

BOLOGNA

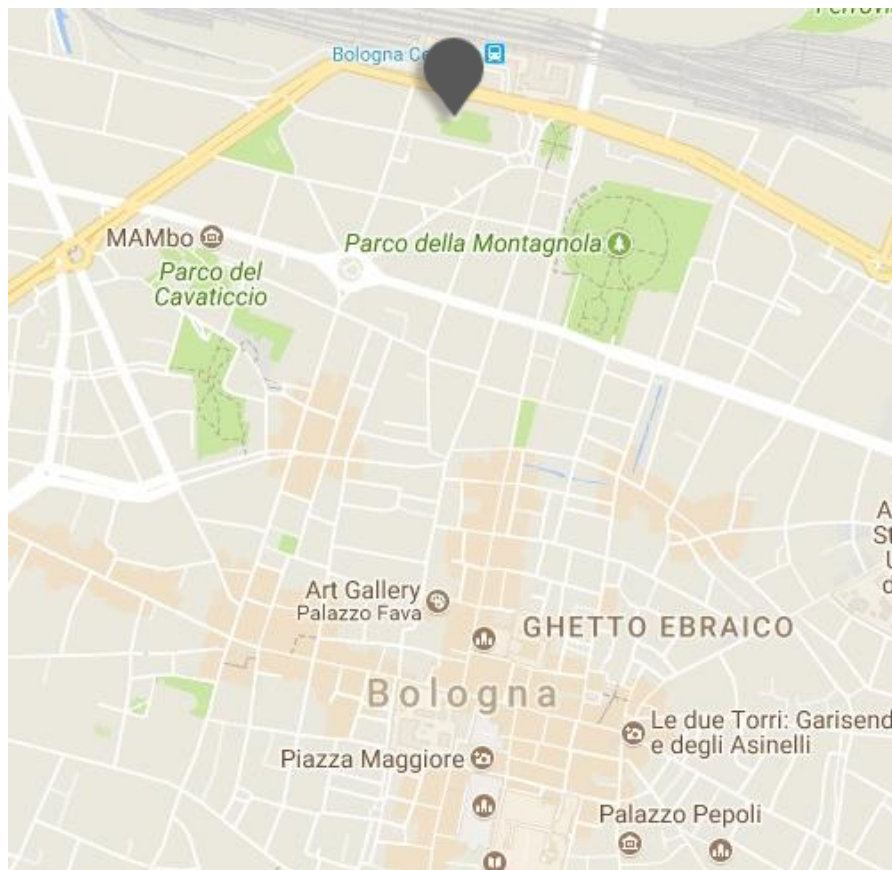


## *Contemporary elegance*

Bologna is a modern city with ancient charm, and the Starhotels Excelsior is the ideal starting point for visitors who want to discover it. Strategically located near the main Central station and only 2 km from Bologna's exhibition centre, the Starhotels Excelsior is a blend of classic style and contemporary taste. The hotel's 193 stylish, elegant and comfortable rooms and suites all feature prestigious furnishings and many look onto an unforgettable panorama of the city's rooftops and mediaeval towers. The Avorio by Eataly restaurant offers a selection of traditional local dishes, based on the finest ingredients, in a refined, vivacious atmosphere.

# Excelsior

BOLOGNA



## Location

Near the Central station, only 3 km from the motorway and 2 km from the exhibition centre

## Distances

**Railway Station:** Km 0,1

**Highway:** Km 3

**Trade fair centre:** Km 29

**Airport:** Borgo Panigale Km 11

Viale Pietramellara, 51 - 40121 Bologna - ITALY

T +39 051 246178 F +39 051 249448

[excelsior.bo@starhotels.it](mailto:excelsior.bo@starhotels.it)

[starhotels.com](http://starhotels.com)



# Excelsior

BOLOGNA

## Restaurant & Bar

No visit to Bologna would be complete without enjoying the outstanding food and wine experiences that the city has to offer. In the refined, welcoming setting of the Avorio by Eataly restaurant, guests can experience a selection of dishes inspired by the authentic Bolognese traditions as well as an international menu. The restaurant benefits from an exclusive partnership with Eataly.

The Fondente by Eataly bar is the perfect place for a relaxing break, a light lunch or an aperitif.



# Excelsior

BOLOGNA



## 193 Rooms

92 Superior  
61 Deluxe  
39 Junior suite  
1 Suite

The hotel's 193 elegant, contemporary and comfortable rooms and suites are all furnished with selected fabrics, precious woods and refined materials. Some also offer a breathtaking panorama of the city's rooftops and soaring mediaeval towers.







## Meetings & Events

**Meeting rooms: 5**

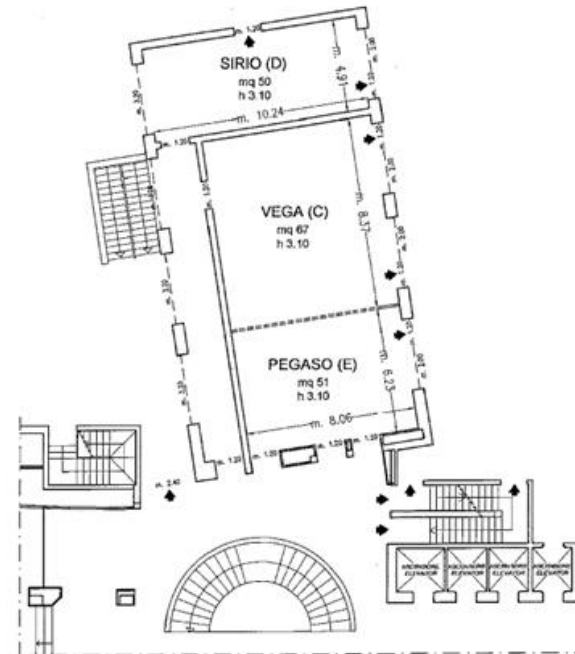
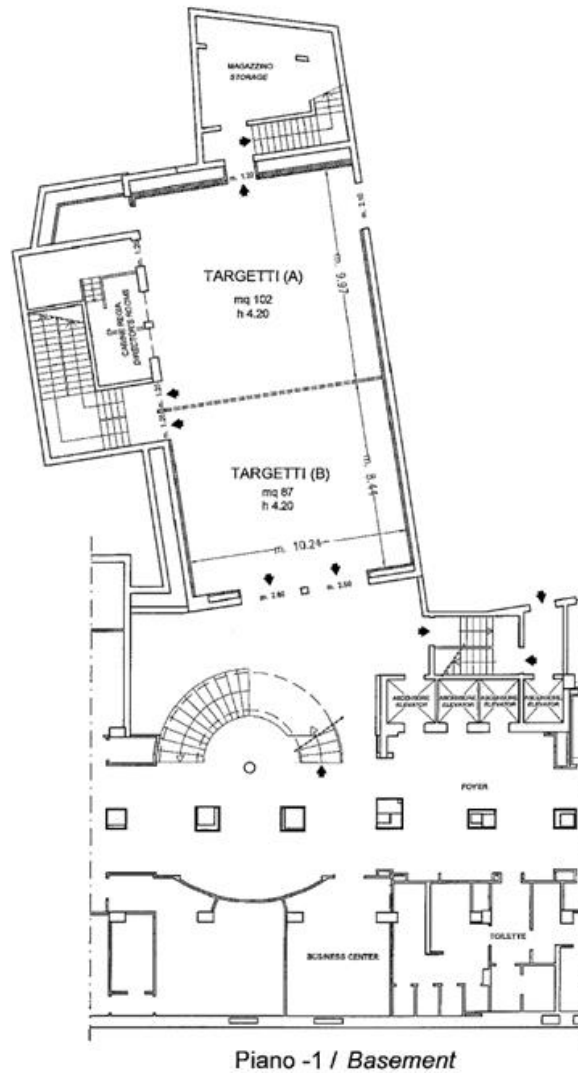
**Capacity (Targetetti theatre style): 210 max**

**Capacity (total meeting room): 400 max**

The hotel's 5 meeting rooms are all equipped with high-tech facilities and can accommodate up to 400 people.

# Excelsior

BOLOGNA



Piano Terra / Ground Floor

- ◆ Uscite di sicurezza / Emergency Exits
- - - Finestre / Windows
- ===== Pareti mobili / Modular Walls
- Colonne / Columns

# Excelsior

BOLOGNA

Meeting rooms	Area mq / ft.	L x W mt. / ft.	Height mt. / ft.	Theatre	Class room	Conference table/ U-shape	Cabaret style^	Cocktail reception	Banquet
Targetti (A)	102 1097,52	9,97x10,24 32,71x33,60	4,2 13,78	60	30	18	24	30	30
Targetti (B)	87 936,12	8,44x10,24 27,69x33,60	4,2 13,78	50	30	20	24	40	30
Targetti (A+B)	189 2033,64	18,49x10,24 60,66x33,60	4,2 13,78	210	96	40	72	140	90
Vega (C)°	67 720,92	8,06x8,37 26,44x27,46	3,1 10,17	50	32	22	24	40	24
Sirio (D)°	50 538	10,24x4,91 33,60x16,11	3,1 10,17	25	16	16	16	20	16
Pegaso (E)°	51 548,76	8,06x6,23 26,44x20,44	3,1 10,17	25	16	16	16	20	16
Vega + Pegaso (C+E)°	119 1280,44	14,72x8,06 48,29x26,44	3,1 10,17	100	50	32	48	100	60
N. 11 Studio°	25 269,1	-	2,7 8,85	15	-	12	6	-	-
Avorio by Eataly Restaurant °	183 1969,08	13,91x20,94 45,64x68,70	-	-	-	-	-	240	140

° Daylight

^ Cabaret style: Diameter tables 180 cm, up to 8 pax each