



SPLENDID VENICE

VENEZIA



SPLENDID VENICE VENEZIA



Destination

Merchants and Doges, courtesans and gallants, Marco Polo and Byzantine treasures, gateway to the East and Maritime Republic, the splendors of La Fenice Theater and the oldest ghetto in the world, carnival extravagance and the exquisite fragility of blown glass, the avant-garde of the Biennale and the Golden Lions of the Film Festival... words are not enough to bring all of Venice's charm to life.



San Marco Mercerie, 760 - 30124 Venezia - ITALY
T +39 041 5200755 F +39 041 5286498
splendidvenice.ve@starhotels.it
hotelsplendidvenice.com

Location

Hotel Splendid Venice stands in the heart of Venice, in a quiet yet central area near the city's main landmarks and many hidden gems. Our private mooring for boats, the water entrance on Rio dei Baretteri, is within walking distance – or a short gondola ride – of the city's most impressive destinations, such as St Mark's Square and the Rialto Bridge.

This sublime setting, immersed in the peace of the calli and canals, offers guests a rare privilege: the frisson of discovering all the real beauty of Venice, beyond the clichés and away from thronging crowds.

Distances

Railway Station: Venezia Santa Lucia 3 km

Airport: Marco Polo, Venice 15 km



SPLENDID VENICE
VENEZIA



All the magic of Venice

The Splendid Venice is a charming luxury hotel, as elegant as Venice itself. In the sixteenth century, it was an inn; today, it is a residence of rare refinement overlooking the canals and the Mercerie, the age-old streets, or calli, that link Piazza San Marco and the Rialto bridge. After a day exploring the countless wonders of this unique city, the Splendid Venice is the ideal refuge; cosy, welcoming and, above all, suffused with warm, authentic, impeccable Italian hospitality.



Key features

- An enviable location in the heart of Venice, within walking distance – or a short gondola ride – of St Mark's Square and the Rialto bridge, the city's ultimate landmarks.
- The intimate atmosphere of an aristocratic house and authentic, impeccable Italian hospitality.
- The gourmet restaurant for relishing Venetian delicacies and the lounge bar for enjoying a drink while admiring the view over the canals.
- The exclusive Solana rooftop terrace, a 200-square-metre lounge on different levels looking onto the rooftops and bell towers, the most spacious of all the hotels in the city.
- Select, attentive service embellished by a thousand thoughtful attentions that make the difference.





Sumptuous rooms

At Splendid Venice, staying in is as great a pleasure as going out. All the rooms and suites, several with balconies and views over St Mark's, are luxuriously, sumptuously furnished, with a sophisticated sense of detail. Silver, brown and lilac set the tone, with wallpapers and damask designs that evoke the Serenissima's textile tradition.

Number of rooms: 165

- 1 Presidential Suite (on request)
- 3 Grand Suite (on request)
- 12 Splendid Heritage Suite
- 2 Junior Suite Vista
- 5 Junior Suite
- 91 Deluxe
- 55 Superior







SPLENDID VENICE
VENEZIA



Dining

Le Maschere restaurant is a top dining venue for Venetians. It offers dishes from the authentic lagoon tradition alongside the great classics of Italian cuisine with a dash of creative brio from the chef. The Lounge Bar on the other hand is the perfect spot for a good coffee, a classic Venetian Spritz or a Bellini at aperitivo time or for a late-night cocktail. And, of course, to enjoy the gorgeous view of the canal that changes through the day as time passes by.



SPLENDID VENICE
VENEZIA



Meeting & Events

With its central location and its refined, elegant atmosphere rich in history, the Splendid Venice is the ideal setting for private and business meetings. It offers a magnificent, sophisticated private event room accommodating up to 35 people, especially suitable for small high-level meetings



SPLENDID VENICE
VENEZIA



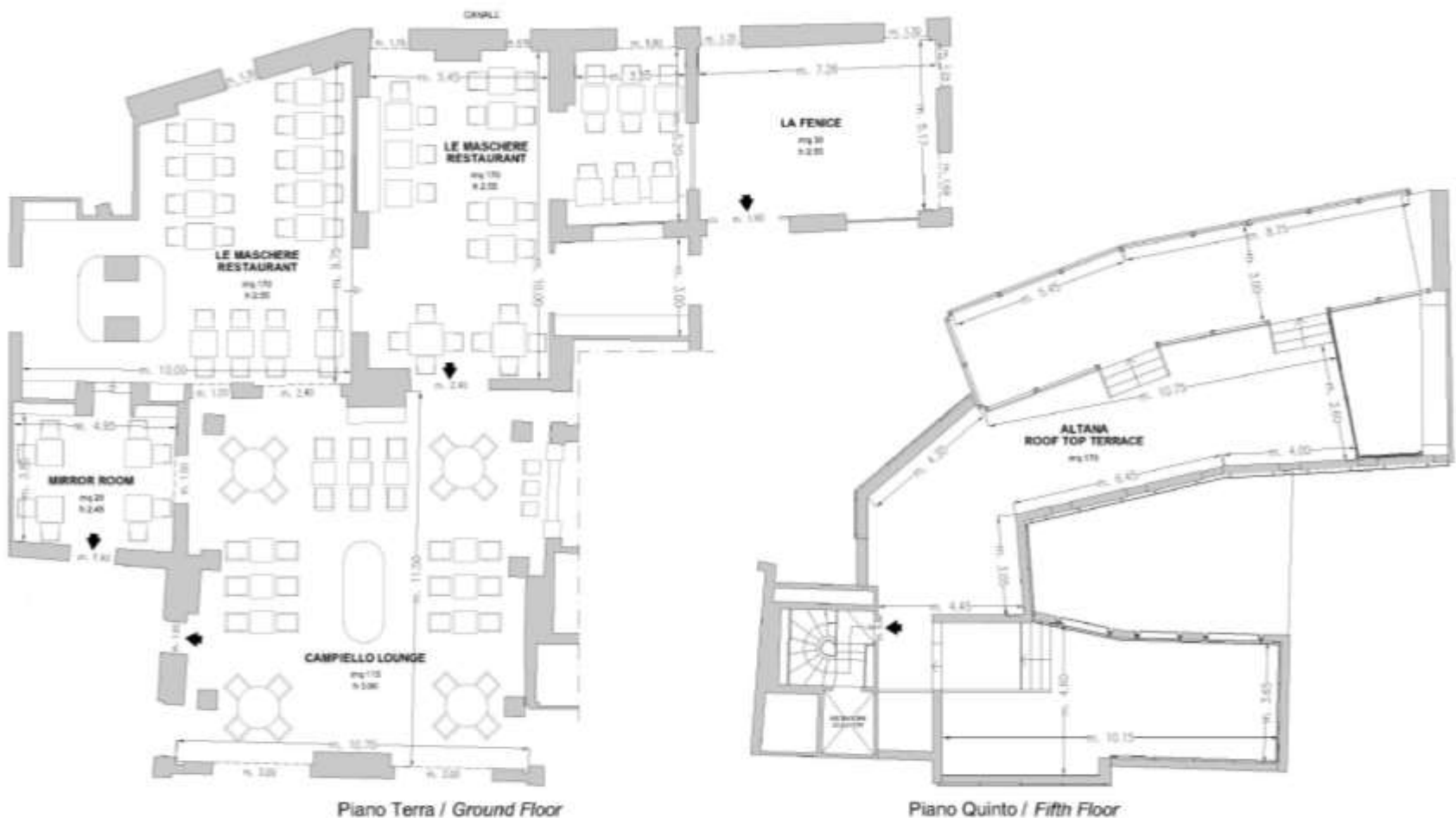
Events

The altana rooftop terrace, with its spectacular views of the city, its towers, churches and roofs, is the ideal setting for an exclusive cocktail party for up to 50 guests under a star-quilted sky.



SPLENDID VENICE

VENEZIA





SPLENDID VENICE

VENEZIA

| Sale riunioni Meeting rooms | Area mq Area sq.ft. | Lung. x larg. mt. L x W ft. | altezza mt. height ft. | teatro theatre | banchi scuola class room | Tavolo unico ferro di cavallo conference table/ U-shape | cabaret style [^] | cocktail reception | banchetto banquet |
|--|------------------------|---|---------------------------|-------------------|-----------------------------------|--|-------------------------------|-----------------------|----------------------|
| La Fenice ^o | 38 409,04 | 7,26x5,17 23,81x16,95 | 2,55 8,36 | 35 | 12 | 18 | 10 | 30 | - |
| Le Maschere Restaurant ^o | 170 * 1829,92 | 9,75x10,00 + 10,00x5,45 31,98x32,80 + 32,80x17,87 | 2,55 8,36 | - | - | - | - | 130 | 62 |
| Mirror room | 20 215,28 | 3,85x4,95 12,63x16,23 | 2,45 8,03 | - | - | - | - | 15 | 8 |
| Campiello Lounge ^o | 115 1237,89 | 11,50x10,70 37,72x35,09 | 3 9,84 | - | - | - | - | 80 | 34 |
| Altana (Roof Top Terrace) | 170 * 1829,92 | 14,20x3 + 10,75x3,60 + 10,15x3,65 46,57x9,83 + 35,25x11,80 33,28x11,97 | - | - | - | - | - | 80 | - |

* Luce naturale / Daylight

[^] Cabaret style: dimensione tavoli su richiesta / Size tables on request

* Spazi con forme irregolari / Areas with irregular forms



SPLendid VENICE
VENEZIA

STARHOTELS[®]
COLLEZIONE

hotelsplendidvenice.com