



HELVETIA & BRISTOL  
FIRENZE



## Destination

Florence offers a unique journey through art, renaissance architecture, glamorous shopping streets and the authentic flavors of Tuscan food and wine: the experience of a lifetime. In the historical center, a UNESCO World Heritage Site, you can walk to all the major city sights: the cathedral or Duomo, Piazza della Signoria, Palazzo Vecchio and the picturesque Ponte Vecchio.



Via dei Pescioni, 2 - 50123 – Firenze - Italy  
Tel. + 39 055 26651 | Fax +39 055 288353  
reservations.helvetiabristol.fi@starhotels.it  
hotelhelvetiabristol.com

## Location

The hotel is in the UNESCO site, a few steps from Palazzo Strozzi, a Florentine Renaissance masterpiece that hosts some of the city's major art exhibitions, around the corner from Via de' Tornabuoni, the most exclusive shopping street in town and just a short walk from the Duomo, Piazza della Signoria and Ponte Vecchio. The beauty and the magnificence of Florence reveal the essence of a city steeped in history.

## Distances

**Railway Station:** Santa Maria Novella 0.6 km

**Airport:** A. Vespucci, Florence 8 km  
G. Galilei, Pisa: 80 km

  
**HELVETIA & BRISTOL**  
FIRENZE



*A historic townhouse  
in the heart of Florence  
with timeless charm*

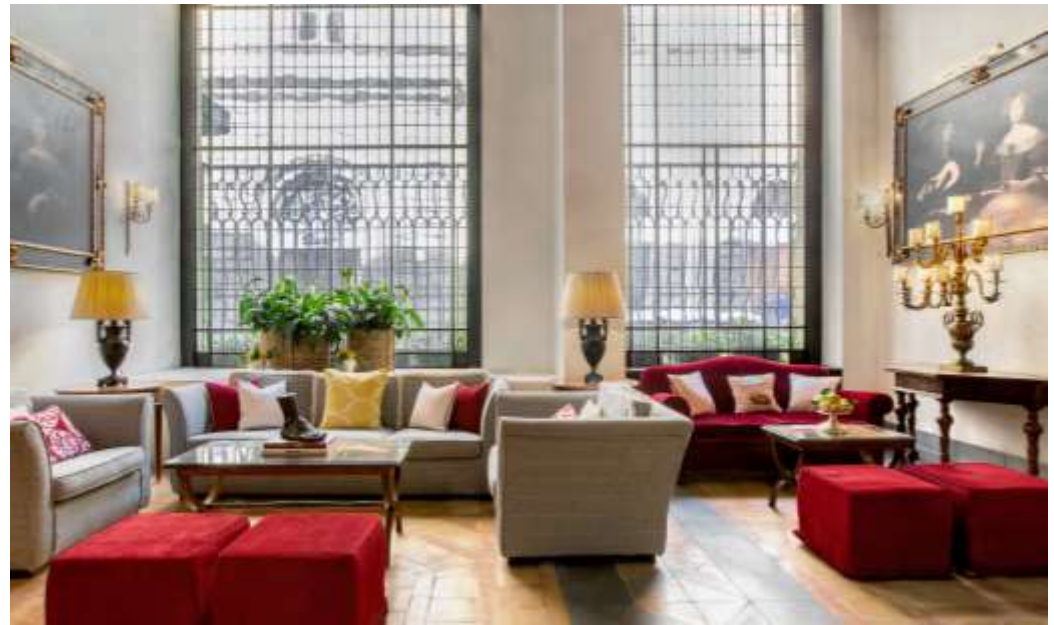
Helvetia & Bristol is a magnificent 19th-century townhouse in the centre of Florence, which continues to captivate the most demanding guests with its timeless charm and impeccable service.

An exquisite symbol of Florentine history, it is one of the most prestigious hotels in the city.



## Key features

- The most centrally located Luxury property within the LHW collection.
- In the heart of the historical center, surrounded by major landmarks.
- Historical townhouse with classical Italian design: antique furniture; objects d'art; paintings and rich furnishings; Carrara marble; 18th century Venetian cotto floors.
- Intimate, cozy atmosphere given by an original fireplace in the lobby.
- Menu in the best Tuscan culinary tradition, with contemporary Florentine specialties for an authentic gastronomic experience.
- Outdoor elegant dehors with brand new comfortable sofas is the perfect place to savour a light lunch, a sparkling aperitif or a dinner under the candles' light.
- Every day a delicious buffet breakfast, enriched by hand made Tuscan cakes and pastries, delights our Guests' awakening in the Winter Garden.
- Cooking class with Chef upon request.
- Free use of Handy smartphone in all guestroom.
- Acqua di Parma amenities in all Suites.





## **Aristocratic rooms**

Its elegant rooms and suites have breathtaking views of Florence, they are awash with light and offer guests a unique experience of exquisite Italian hospitality. The suites, some of which are interconnectable, are expertly decorated with antique furniture, Murano glass chandeliers, precious objects and paintings by famous artists.

**Number of rooms: 67**

- 2 Panoramic Suite
- 4 Heritage Suite
- 9 Suite
- 3 Junior Suite View
- 8 Junior Suite
- 8 Deluxe Double Room
- 28 Classic Double Room
- 5 Classic Single Room







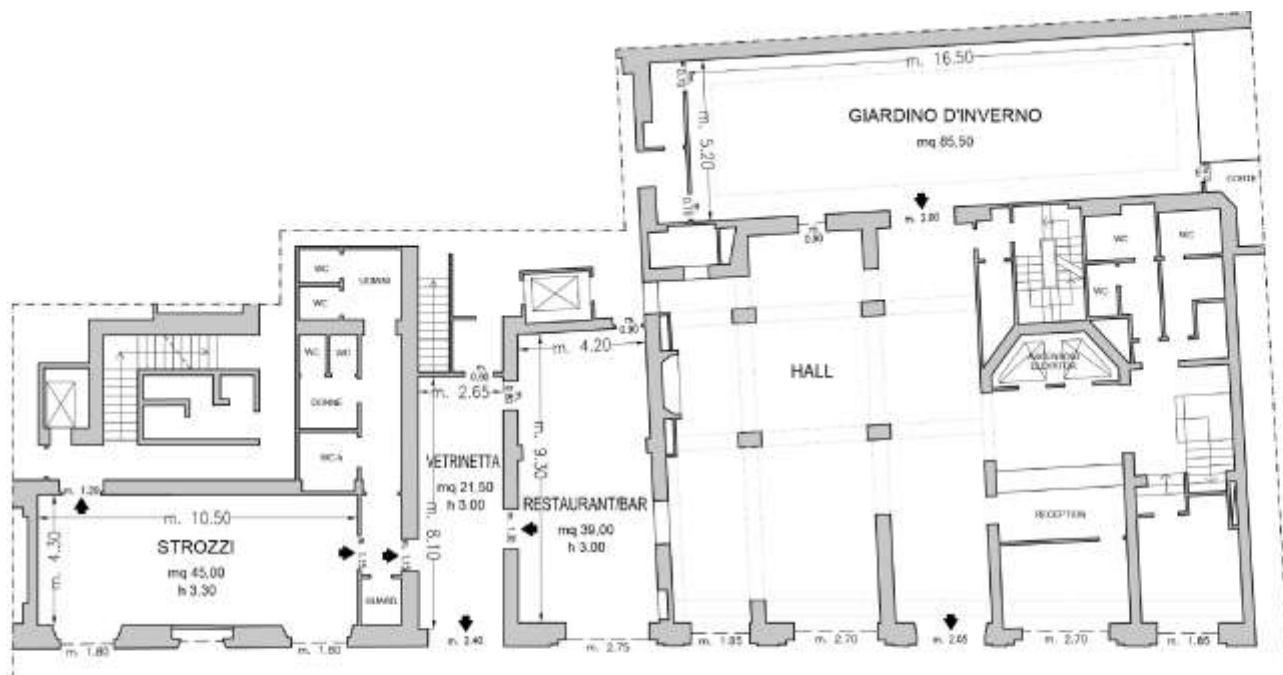
## Dining

The culture of excellence extends from the gourmet restaurant Hostaria Bibendum, where our Chef delights guests with his contemporary interpretations of classic Tuscan recipes, and to the Hostaria Bibendum bar: the selection of exquisite wines and special ingredients, the passion of local producers, and the promotion of the territory come to the fore in the expertly crafted cocktails and the rich menu, inspired by the Tuscan tradition.



## Meeting & Events

The Helvetia & Bristol provides the perfect setting for private events, conferences and seminars. All the needs of our clients are catered for by the professional management team, who meticulously coordinate every event hosted by the hotel. The two magnificent event spaces with different styles and sizes, the Winter Garden and Sala Strozzi, can accommodate up to 70 people in a theatre-style setup.



**Piano Terra / Ground Floor**

- ◆ Uscite di sicurezza / Emergency Exits
- Finestre / Windows
- - - - Pareti mobili / Modular Walls
- Colonne / Columns

2 meeting room fino a 70 persone / 2 meeting rooms up to 70 seats

Sale riunioni <i>Meeting rooms</i>	Area mq <i>Area sq.ft.</i>	Lung. x larg. mt. <i>LxW ft.</i>	Altezza mt. <i>height ft.</i>	Teatro <i>theatre</i>	banchi scuola <sup>^</sup> <i>class room</i>	Tavolo unico ferro di cavallo <sup>^</sup> <i>conference table/U-shape</i>	Cabaret style <sup>^</sup>	Cocktail reception	Banchetto <sup>^</sup> <i>banquet</i>
Giardino d'Inverno <sup>°</sup>	85,5 920,31	17,82x4,8 58,5x16	-	60/70	28	40	28	80	66/70
Sala Strozzi <sup>°</sup>	45 484,37	10,5x4,3 34,4x14,1	-	36	24	26	16	40	33
Hall <sup>°</sup>	-	-	-	-	-	-	-	80/90	-
Dehors	38,28 412	11,90x2 <i>area ristorante</i> 39,04x6,56 <i>area ristorante</i> 3,60x1,8 <i>area salotto bar</i> 11,81x5,90 <i>area salotto bar</i>	-	-	-	-	-	30	16
Hostaria Bibendum Restaurant/Bar <sup>°</sup>	39 419,79	9,30x4,20 30,5x14	-	-	-	-	-	30	16
Vetrinetta <sup>°</sup>	18,93 203,76	6,94x2,65 23x9	-	-	-	-	-	30	16

<sup>°</sup> Luce Naturale / Daylight

<sup>^</sup> Cabaret style: preparato con tavoli da 4 sedute

<sup>^</sup> Banchi scuola: con 2 persone per tavolo

<sup>^</sup> Ferro di cavallo: con 2 persone per tavolo

<sup>^</sup> Banchetto: sedute per ristorazione



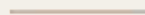
## **The Bank**

The hotel will grow significantly with the opening of new areas dedicated to provide a unique experience (the extension will be completely annexed to the main existing hotel).



HELVETIA & BRISTOL

FIRENZE



STARHOTELS<sup>®</sup>

COLLEZIONE

[helvetiaebristol.com](http://helvetiaebristol.com)