



GRAND HOTEL CONTINENTAL SIENA





GRAND HOTEL CONTINENTAL
SIENA



Destination

No other city retains the cultural and civil heritage of the Middle Ages as Siena does. Wandering through its streets is like visiting an open-air museum. Its historic centre is simply bursting with history, architecture and artistic masterpieces. If this is not enough, just a few miles away there are many alternatives, like San Gimignano, which represents the image of a medieval city around the world, and the rolling hills of Chianti with its villages of Radda, Castellina and Greve.



GRAND HOTEL CONTINENTAL
SIENA



Palio di Siena

The Palio is the most important event in Siena. In the Palio, the various Sienese "contrade", areas in which the city is divided, challenge each other in a passionate horse race in the heart of the city in the Piazza del Campo.



Via Banchi di Sopra 85 53100 Siena - Italy
Tel. +39 0577 56011
reservations.continental.si@starhotels.it
grandhotelcontinetalsiena.com

Location

The Grand Hotel Continental enjoys a privileged location on the city's main street, just a short walk from Piazza del Campo and the magnificent Duomo cathedral.

Strolling through the medieval streets with their charming shops and unique views, the main architectural, artistic and historical monuments of the city of the Palio are all within easy reach.

Distances

Railway Station: Siena Station 1,6 km

Airport: A. Vespucci, Florence 79 km
G. Galilei, Pisa: 110 km


GRAND HOTEL CONTINENTAL
SIENA



*The only 5-star luxury
hotel in the heart of Siena*

The Grand Hotel Continental is housed in a magnificent 17th-century palazzo that radiates elegance and charm. With its architectural magnificence, historic splendour and flawless service, every stay is transformed into a truly unique experience. One of the most prestigious hotels in the city, it is the only 5-star boutique hotel situated in the historic centre. Palazzo Gori Pannilini, the noble residence that today houses the hotel, is a wonderful example of Italian elegance.



Key features

- The only 5-star luxury hotel set in the historic centre of Siena.
- 17th-century palazzo with classical Italian design: antique furniture, original frescoes, precious paintings and artworks, Carrara marble and 17th-century Tuscan terracotta floors
- Guests are fully immersed in a Tuscan experience that is rich in art, history and culture.
- An enviable location in the heart of the pedestrian area, close to shops, bars and restaurants.
- Breathtaking views of the Duomo and the spectacular rolling hills of the surrounding Tuscan countryside.
- Signature Vin Santo Swing served with a fried cantuccino biscuit.





GRAND HOTEL CONTINENTAL
SIENA



Aristocratic rooms

All of the rooms and suites, luxuriously appointed with antique paintings and opulent furnishings, evoke a centuries-old, aristocratic atmosphere. Each room is a masterpiece, with its own inimitable character, that has been refined over the centuries.

Number of rooms: 51

- 1 Panoramic Suite
- 3 Heritage Suite
- 6 Noble Junior Suite
- 2 Junior Suite
- 12 Deluxe Double
- 9 Superior Double
- 16 Classic Double
- 2 Classic Single





GRAND HOTEL CONTINENTAL
SIENA



Dining

At the Grand Hotel Continental, elegance, art and fascinating history can also be found at the tables of the Sapordivino restaurant, where our Chef interprets traditional Tuscan cuisine in his own unique way, and at the Lounge Bar by Sapordivino. Guests are taken on a veritable gastronomic journey with delectable cocktails, such as the signature "Vin Santo Swing" accompanied by a fried cantuccino biscuit, and a rich menu inspired by ancient recipes with contemporary taste.



Meetings & Events

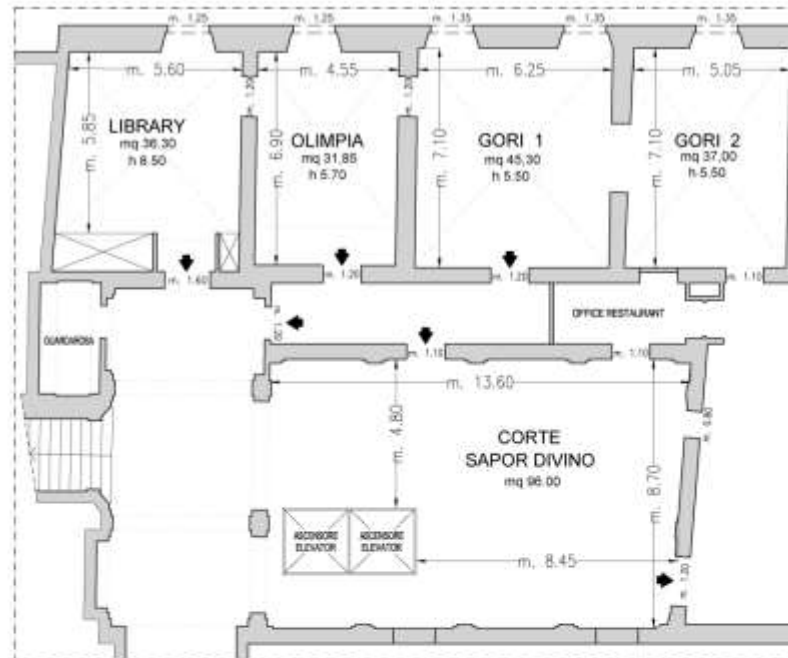
The Grand Hotel Continental offers the ideal setting for events and both private and business meetings. The hotel houses four of Siena's most impressive halls, with high ceilings, beautiful 17th-century frescoes and exquisite Murano glass chandeliers offering the perfect backdrop for private events, weddings, seminars and conferences for up to 100 guests.



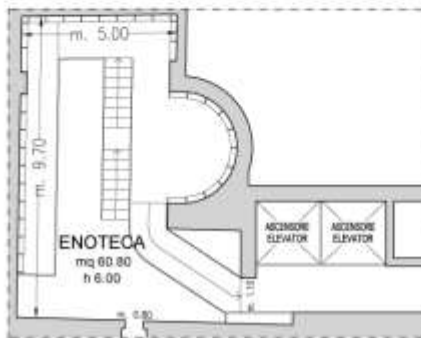
GRAND HOTEL CONTINENTAL SIENA



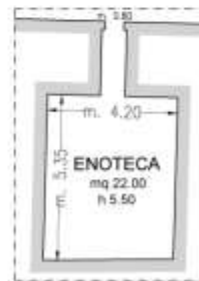
Piano Primo / First Floor



Piano Terra / Ground Floor



Piano -1 / 1st Basement



Piano -2 / 2nd Basement

◆ Uscite di sicurezza / Emergency Exits

--- Finestre / Windows

■ Colonne / Columns



GRAND HOTEL CONTINENTAL
SIENA

Sale riunioni <i>Meeting rooms</i>	Area mq <i>Area sq.ft.</i>	Lung. x larg. mt. <i>LxW ft.</i>	Altezza mt. <i>height ft.</i>	Teatro <i>theatre</i>	banchi scuola [^] <i>class room</i>	Tavolo unico ferro di cavallo [^] <i>conference table/U-shape</i>	Cabaret style [^]	Cocktail reception	Banchetto [^] <i>banquet</i>
Salone delle feste [*]	105 1130,2	13,5x7,6 43,14x24,9	8,45 27,7	100	40	35	40	110	100
Olimpia [*]	31,85 342,8	6,9x4,55 22,6x14,9	5,7 18,7	-	-	-	-	20	20
Library [*]	36,3 390,7	5,85x5,6 19,2x18,4	8,5 27,9	30	12	-	-	12	16
Gori 1 [*] e 2 [*]	82,3 885,8	7,10x11,3 23,3x37,1	5,5 18,04	30	12	-	-	30	45
Sapordivino Restaurant [*]	96 1033	-	-	50	-	-	-	80	70
Wine Cellar by Sapordivino	22 236,8	5,35x4,20 17,5x13,7	5,5 18,04	-	-	-	-	25	12

* Luce Naturale / Daylight

[^] Cabaret style: preparato con tavoli da 7 sedute

[^] Banchi scuola: con 3 persone per tavolo

[^] Ferro di cavallo: con 3 persone per tavolo

[^] Banchetto: sedute per ristorazione



GRAND HOTEL CONTINENTAL
SIENA

STARHOTELS[®]
COLLEZIONE

grandhotelcontinentalsiena.com