



STARHOTELS®

Tourist

MILANO

T rue style doesn't need to shout. The Tourist has a quiet confidence that never fails to turn heads. Set in the cosmopolitan new business district, it's within easy reach of the city center and a short walk from the Arcimboldi Theatre. Our location and services make us popular with business guests, from our seven flexible conference rooms and experienced team to the beautifully refurbished rooms and suites. After a day of work comes a night of indulgence, courtesy of the extraordinary La Cuccagnina restaurant.

Viale Fulvio Testi, 300
20126 Milano - ITALY
T +39 02 6437777
F +39 02 6472516
tourist.mi@starhotels.it
starhotels.com



Rooms & Suites

Tailored with relaxation in mind, our 134 rooms and suites offer a modern style without compromising on comfort.

Restaurant & Bar

Our restaurant and bar treat all the senses, fusing fine cuisine and exquisite drinks with bold, modern surroundings.

Services

Carefully selected to enhance your stay – from garage, parking and room service to Wi-Fi and a fitness center.

Meetings & Events

Seven contemporary meeting rooms for up to 130 people and an experienced Events Manager will help deliver your event with flair.







Location

The Tourist hotel is conveniently located in the BicoCCA district in northeast Milan, easily reached by all major transport links. Just outside the city center, you'll find Milan's must-see sights within easy reach, including the nearby Arcimboldi Theater. You're just a short walk from the metro station and a quick journey to Milan's historic quarter, where popular attractions such as the stunning Duomo and the Museo Poldi Pezzoli are waiting to be explored.



From the station

- From the Milano Centrale train station (5km), take the metro line 3 towards Comasina to the Zara stop, then take metro line 5 direction Bignami to the stop Bignami, just a few steps away from the hotel.

From the highway

- From the A1 Milano/Roma highway, the A4 Milano/Venezia highway, the A7 Milano/Genova highway and the A8 Milano/Laghi highway (3km), take the Tangenziale Est (East bypass road), continue on A51 and take the Tangenziale Nord (A52), direction Torino/Como/Malpensa to the Milano/Viale Zara exit.

From the airport

- From Linate Airport (10 km), from Malpensa Airport (50 km) and from Orio al Serio Airport, take the shuttle to the Stazione Centrale, then take metro line 3 towards Comasina to the Zara stop, then take metro line 5 direction Bignami to the stop Bignami, just a few steps away from the hotel.

From the fieri

- From the New Fiera Complex (20km), take the Subway Red Line from Rho Fiera Milano to Sesto San Giovanni/Sesto 1° maggio FS"; stop at Lotto-Stop, take line 5 direction Bignami and stop at Bignami -Stop, just a few steps away from the hotel.



7 meeting rooms

All meeting rooms are equipped with: Wi-Fi (at a charge), sound system, screen, LCD projector⁽¹⁾, flip chart, other services are available upon request.

⁽¹⁾Max one LCD projector complimentary, additional requests at a charge



| Meeting rooms | Area mq / ft. | L x W mt. / ft. | Height mt. / ft. | Theatre | Class room | Conference table/ U-shape | Cabaret style [^] | Cocktail reception | Banquet |
|---------------------------------------|----------------|--|------------------|---------|------------|---------------------------|----------------------------|--------------------|---------|
| Barberini (A) | 60 645,6 | 7,25x8,10 23,79x26,57 | 4,05 13,29 | 50 | 25 | 25 | - | 45 | 30 |
| Barberini (B) | 62 667,12 | 7,60x8,10 24,93x26,57 | 4,05 13,29 | 50 | 25 | 25 | - | 45 | 30 |
| Barberini (A+B) | 123 1323,48 | 14,85x7,60 48,70x24,93 | 4,05 13,29 | 120 | 54 | 54 | 25 | 120 | 70 |
| Corsini (A) | 60 645,6 | 6,80x8,60 22,31x28,22 | 3,86 12,66 | 50 | 25 | 25 | - | 45 | 30 |
| Corsini (B) | 61 656,36 | 6,80x8,60 22,31x28,22 | 3,86 12,66 | 50 | 25 | 25 | - | 45 | 30 |
| Corsini (A+B) | 121 1302,47 | 13,70x8,60 44,95x28,22 | 3,86 12,66 | 120 | 54 | 54 | 25 | 110 | 65 |
| Visconti | 67 721,18 | 9,15x7,32 30,00x24,00 | 2,86 9,38 | 55 | 30 | 26 | - | 70 | 40 |
| Medici | 49 527,42 | 7,70x6,40 25,26x21,00 | 2,86 9,38 | 40 | 25 | 18 | - | 25 | 15 |
| Sforza | 40 430,55 | 9,77x3,70 32,04x12,13 | 2,86 9,38 | 32 | 20 | 20 | - | 20 | - |
| La Cuccagnina Restaurant [°] | 180 1937,56 | 12,40x11,50 6,00x4,70 40,67x37,72 19,68x15,42 | 3 9,84 | - | - | - | - | 140 | 90 |

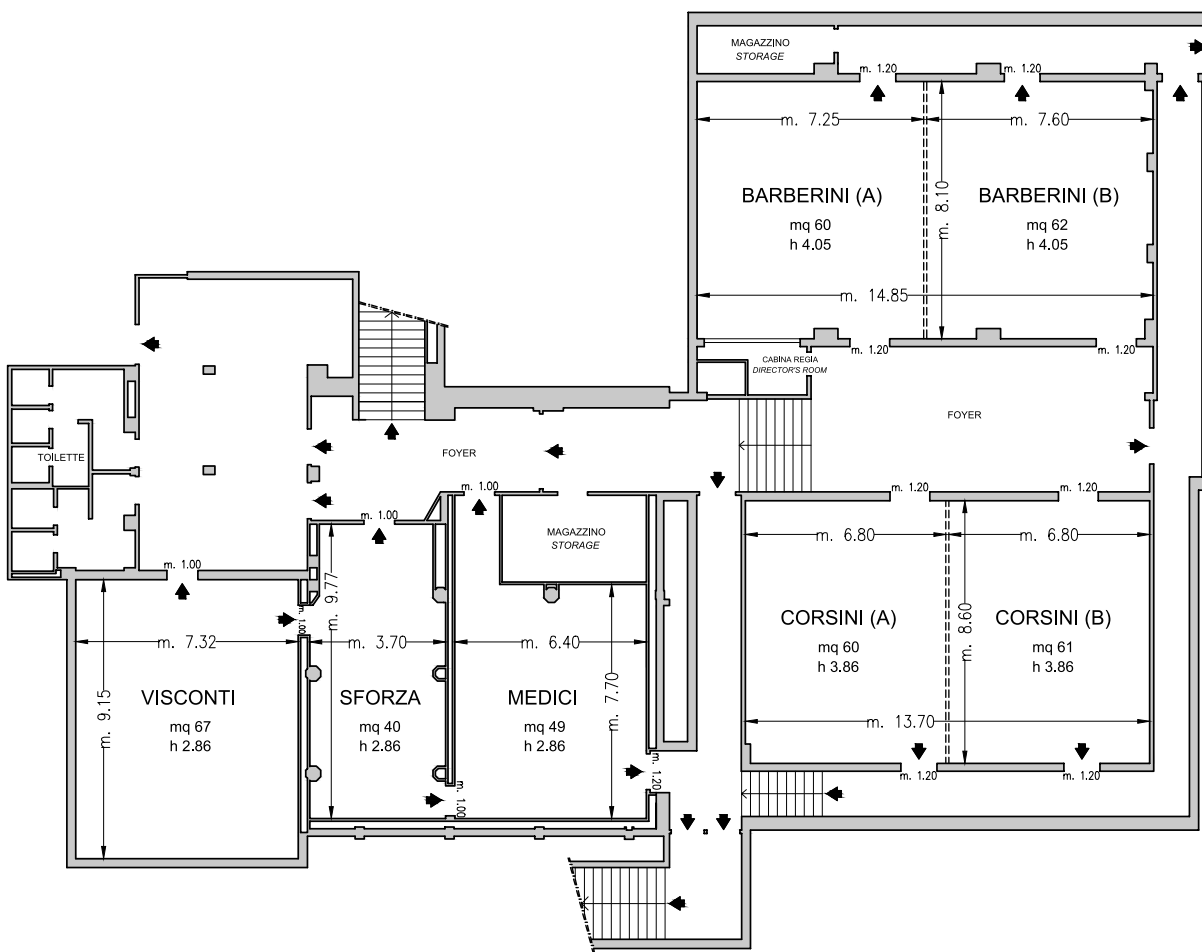
[°] Daylight

[^] Cabaret style: Size tables on request

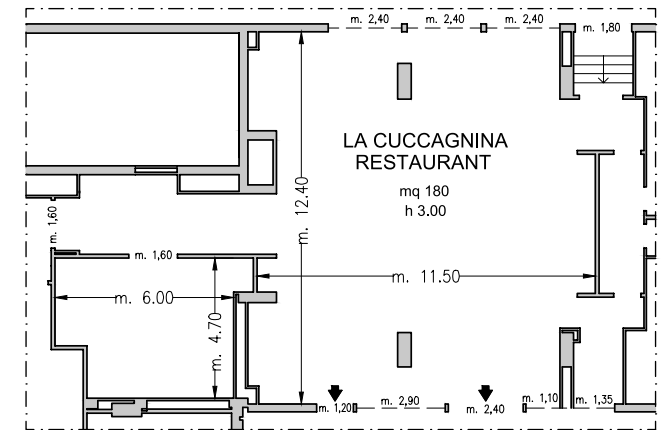
STARHOTELS®

Tourist
MILANO

Viale Fulvio Testi, 300
20126 Milano - ITALY
T +39 02 6437777 - F +39 02 6472516
meeting.tourist.mi@starhotels.it starhotels.com



Piano -1 / Basement



Piano Terra / Ground Floor

➤ Uscite di sicurezza / Emergency Exits

----- Finestre / Windows

===== Pareti mobili / Modular Walls

■ Colonne / Columns

7 meeting room fino a 120 persone / 7 meeting rooms up to 120 seats

STARHOTELS®

Tourist
MILANO

Viale Fulvio Testi, 300
20126 Milano - ITALY
T +39 02 6437777 - F +39 02 6472516
meeting.tourist.mi@starhotels.it starhotels.com