

A photograph of a hotel lounge area. In the center is a fireplace with a stone surround, containing several tall, glowing candles. Two dark, vertically striped armchairs are positioned on either side of the fireplace. In the foreground, a large, dark, round ottoman with a light-colored top and a metal ring detail sits on a red carpet. The background features a dark wood bookshelf filled with books and decorative objects. A framed artwork is mounted on the wall above the fireplace.

STARHOTELS®

Anderson

MILANO

A landmark in its own right, just a few steps from the Centrale railway station, the Anderson is woven into the fabric of Milano's fashion scene. With its metropolitan lounge and cosmopolitan atmosphere, it's a favorite with many of the country's leading designers. Tactile materials. Minimalist interiors. Artful splashes of color. Each one of the 106 rooms has been carefully designed to fuse style and substance. Once you've savored this sanctuary, the Anderson is well placed for exploring the city's historic center, boutiques, the Galleria shopping mall and Navigli district.

Piazza Luigi di Savoia, 20
20124 Milano - ITALY
T +39 02 6690141
F +39 02 6690331
anderson.mi@starhotels.it
starhotels.com

Rooms & Suites

Thoughtfully designed to combine comfort with contemporary chic, our 106 rooms showcase the best in Italian style.

Restaurant & Bar

Enjoy everything from morning coffees to local and international cuisine and indulgent cocktails, all in a stunning minimalist setting.

Services

Specially selected to make your stay truly effortless – from laundry and room service to Wi-Fi and expert local advice.

Meetings & Events

Our four modern meeting rooms, for up to 50 people, and experienced team will help make your event one to remember.







Location

The Anderson hotel is located in the center of Milan, near the Centrale train station with all of the city's must-see sights and tucked-away treasures within easy reach. Discover Milan's architectural marvels with a trip to the ancient, ornate Duomo, or its cultural and artistic traditions at the famous La Scala Theater and the Museo Poldi Pezzoli. Then explore the city's twin passions: a football match at the San Siro or a stroll through the boutiques of the most famous fashion streets.



From the station

- Our hotel is just 30m from the Central train station, in front of the Malpensa Express's Air Terminal and there are bus services to Linate airport and Orio al Serio (Bergamo's Airport).

From the highway

- 6km from the motorway exits: A1 (Milan/Rome), A4 (Milan/Venice) and A8 (Milan/Switzerland). Take exit in the direction of City Center (Centro città)- Train Station (Stazione Centrale).

From the airport

- From Linate/City Airport (8km) and Malpensa/Intercontinental Airport (50km), take the shuttle bus to Central Railway Station. Our 4 star hotel in Milan is just opposite the entrance to the train station.
- From Malpensa (Intercontinental Airport), take the Malpensa Express train (every 30 minutes) to Central Railway Station (Stazione Centrale). You are very closed to the hotel.

From the fiera

- From the Fiera Milano City (2km), take the Subway Red Line from Amendola to Cadorna (direction Sesto), then the Green Line Subway to central railway station or proceed on Red Line to Duomo, then the Yellow line (direction Zara) to central railway station.
- From the New Fiera Complex (12km), take the Subway Red Line from Rho Fiera Milano to Cadorna (direction Sesto), then the Green Line Subway to central railway station or proceed on Red Line to Duomo, then take the Yellow line (direction Zara) to central railway station.



4 meeting rooms

All meeting rooms are equipped with: Wi-Fi (at a charge), sound system, screen, LCD projector⁽¹⁾, flip chart, other services are available upon request.

⁽¹⁾Max one LCD projector complimentary, additional requests at a charge

Meeting rooms	Area mq / ft.	L x W mt. / ft.	Height mt. / ft.	Theatre	Class room	Conference table/ U-shape	Cabaret style [^]	Cocktail reception	Banquet
Montenapoleone (A)	24 258,24	6,00x4,00 19,68x13,12	2,4 7,87	15	-	12 - 8	-	-	-
Montenapoleone (B)	12 129,12	3,00x4,00 9,84x13,12	2,4 7,87	-	-	8	-	-	-
Montenapoleone (C)	11 118,36	2,80x4,00 9,19x13,12	2,4 7,87	-	-	8	-	-	-
(A+B)	36,5 392,74	9,00x4,00 29,53x13,12	2,4 7,87	35	16	20 - 15	-	-	-
(B+C)	23,5 252,86	5,80x4,00 19,03x13,12	2,4 7,87	15	-	12 - 8	-	-	-
(A+B+C)	50 516,48	11,80x4,00 38,71x13,12	2,4 7,87	50	24	26 - 24	-	-	-
Della Spiga	23 247,48	5,80x4,00 19,03x13,12	2,4 7,87	15	-	12 - 8	-	-	-
Black Restaurant [°]	48 516,48	6,90x7,00 22,64x22,97	2,4 7,87	-	-	-	-	50	34
Breakfast Room	64,3 691,87	12,00x7,00 39,37x22,97	2,4 7,87	-	-	-	-	-	50

[°] Daylight

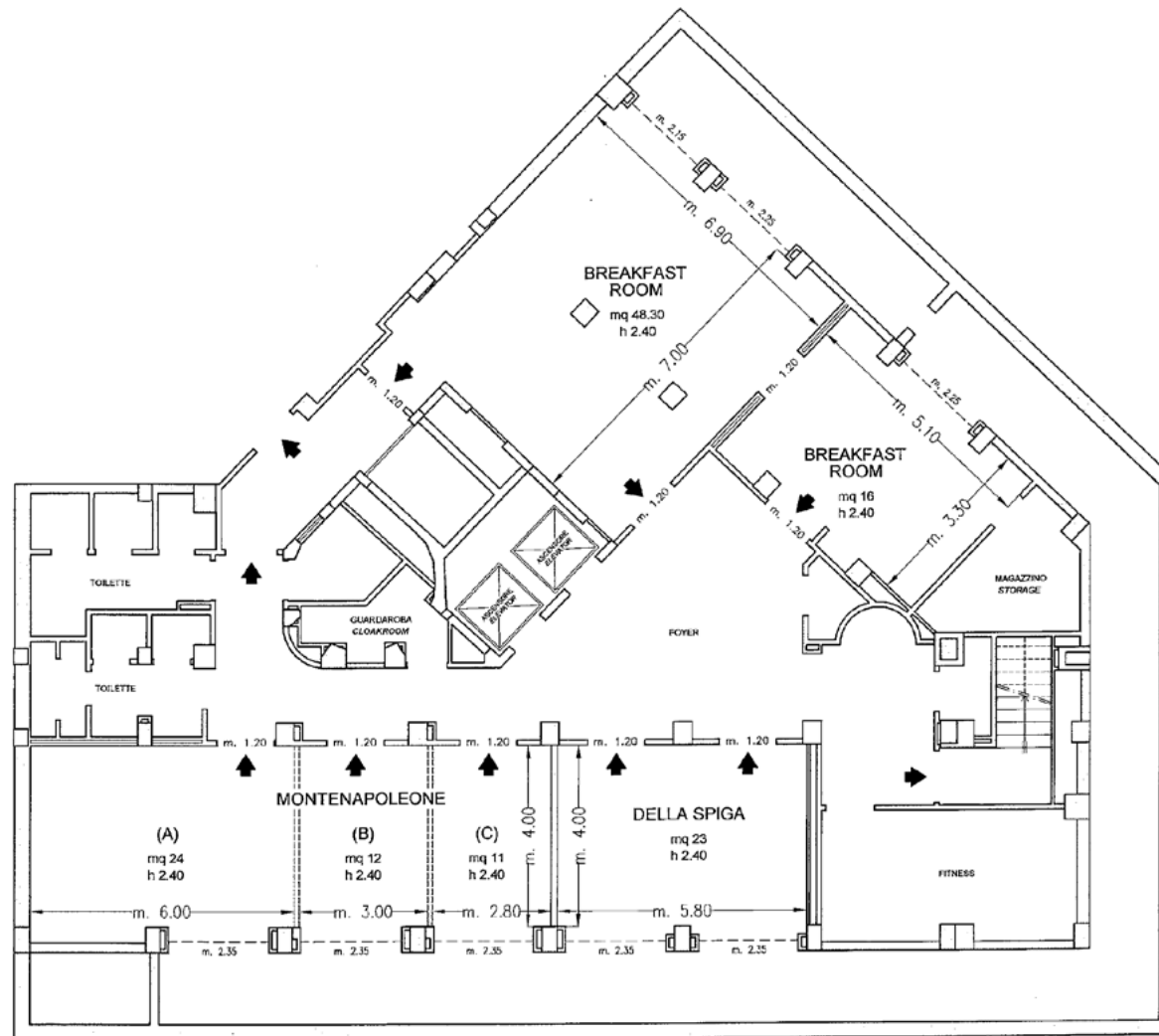
[^] Cabaret style Sizes tables diameter 150 cm



STARHOTELS®

Anderson
MILANO

Piazza Luigi di Savoia, 20
20124 Milano - ITALY
T +39 02 6690141 - F +39 02 6690331
meeting.anderson.mi@starhotels.it starhotels.com



Piano -1 / Basement

4 meeting room fino a 50 persone/ 4 meeting rooms up to 50 seats

➤ Uscite di sicurezza / Emergency Exits

----- Finestre / Windows

----- Pareti mobili / Modular Walls

□ Colonne / Columns

STARHOTELS®

Anderson
MILANO

Piazza Luigi di Savoia, 20
20124 Milano - ITALY
T +39 02 6690141 - F +39 02 6690331
meeting.anderson.mi@starhotels.it starhotels.com